

DITCH CONSTRUCTION - LEFT			
STATION	SIZE-SHAPE TYPE	LINING	
		TYPE	QUANTITY
365+00 TO 365+50	SPL. 2' F.B. DT.	ROCK	-
365+50 TO 366+77.44	NORMAL 2' F.B. DT.	ROCK	-
367+50 TO 368+02.22	SPL. 2' F.B. DT.	ECB	94 S.Y.
368+18.00 INLET*	3' F.B. INLET DT.	CL. III	60 TONS
368+10.21 TO 369+50	SPL. 2' F.B. DT.	TRM I	167 S.Y.
369+50 TO 371+09.82**	SPL. 2' F.B. DT.	TRM I	226 S.Y.
371+86.66 TO 372+59.64	SPL. 2' F.B. DT.	ECB	114 S.Y.
373+37.52 TO 374+50	SPL. 2' F.B. DT.	ECB	194 S.Y.
374+50 TO 379+00	NORMAL 2' F.B. DT.	ECB	776 S.Y.
379+00 TO 379+24.74	2' F.B. SURF. DT.	ECB	39 S.Y.
379+27.00 INLET	2' F.B. INLET DT.	CL. III	49 TONS
379+29.26 TO 380+00	2' F.B. SURF. DT.	ECB	91 S.Y.

* PARTIALLY GROUTED RIPRAP - USE 8 CU. YD. CONCRETE CLASS "B"
 ** DEPTH TO PROTECT = 1.5'

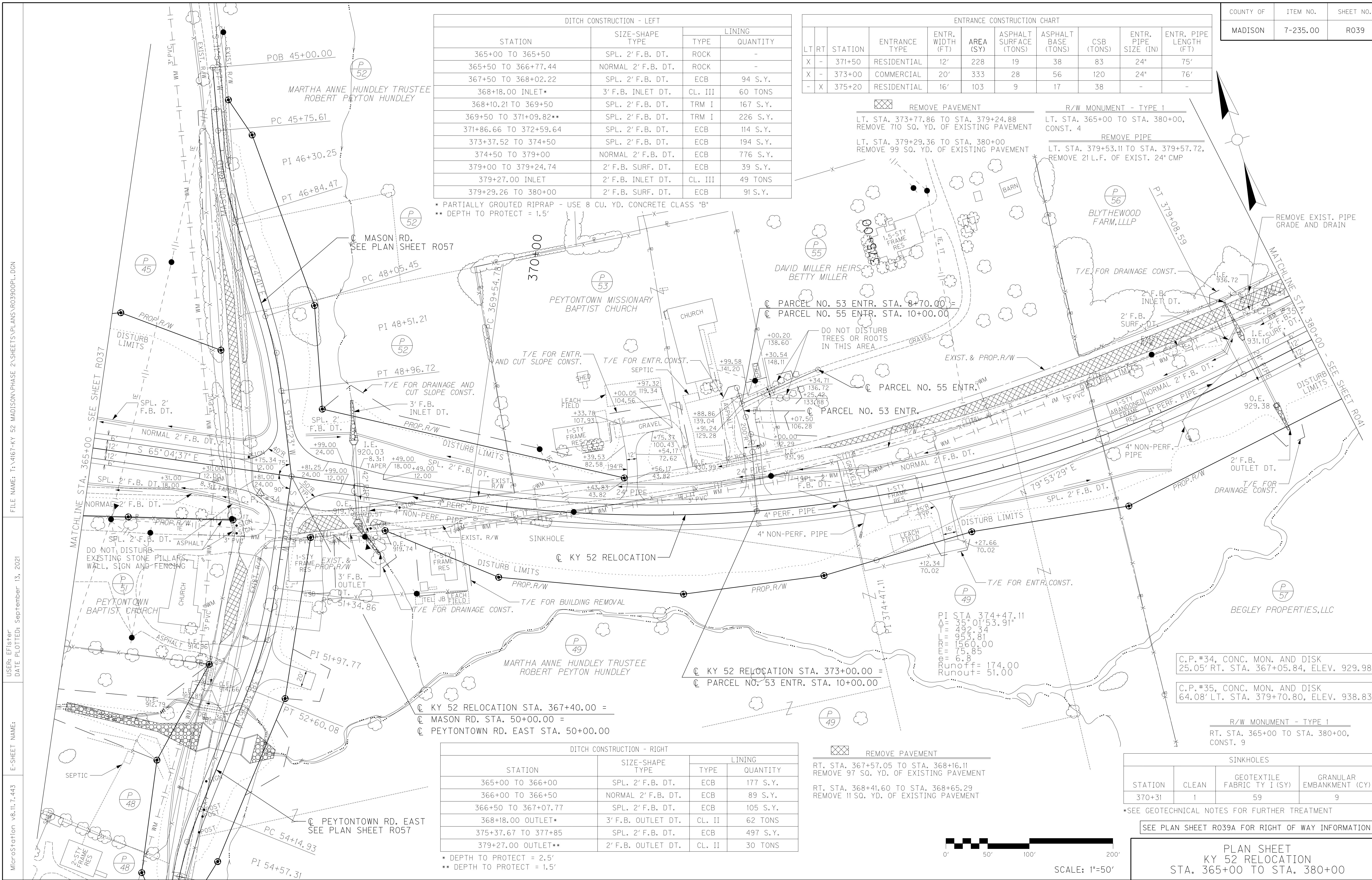
ENTRANCE CONSTRUCTION CHART										
LT	RT	STATION	ENTRANCE TYPE	ENTR. WIDTH (FT)	AREA (SQ)	ASPHALT SURFACE (TONS)	ASPHALT BASE (TONS)	CSB (TONS)	ENTR. PIPE SIZE (IN)	ENTR. PIPE LENGTH (FT)
X	-	371+50	RESIDENTIAL	12'	228	19	38	83	24"	75'
X	-	373+00	COMMERCIAL	20'	333	28	56	120	24"	76'
-	X	375+20	RESIDENTIAL	16'	103	9	17	38	-	-

REMOVE PAVEMENT
 LT. STA. 373+77.86 TO STA. 379+24.88
 REMOVE 710 SQ. YD. OF EXISTING PAVEMENT

R/W MONUMENT - TYPE 1
 LT. STA. 365+00 TO STA. 380+00,
 CONST. 4

REMOVE PIPE
 LT. STA. 379+29.36 TO STA. 380+00
 REMOVE 99 SQ. YD. OF EXISTING PAVEMENT

REMOVE PIPE
 LT. STA. 379+53.11 TO STA. 379+57.72,
 REMOVE 21 L.F. OF EXIST. 24" CMP

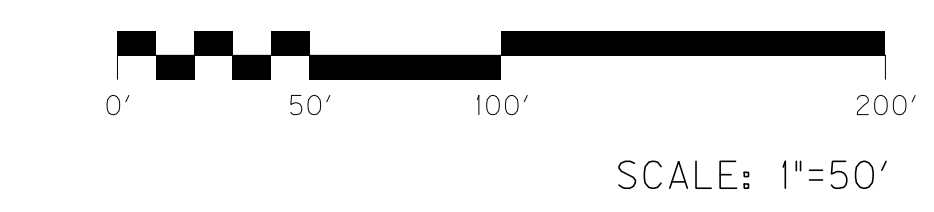


DITCH CONSTRUCTION - RIGHT			
STATION	SIZE-SHAPE TYPE	LINING	
		TYPE	QUANTITY
365+00 TO 366+00	SPL. 2' F.B. DT.	ECB	177 S.Y.
366+00 TO 366+50	NORMAL 2' F.B. DT.	ECB	89 S.Y.
366+50 TO 367+07.77	SPL. 2' F.B. DT.	ECB	105 S.Y.
368+18.00 OUTLET*	3' F.B. OUTLET DT.	CL. II	62 TONS
375+37.67 TO 377+85	SPL. 2' F.B. DT.	ECB	497 S.Y.
379+27.00 OUTLET**	2' F.B. OUTLET DT.	CL. II	30 TONS

* DEPTH TO PROTECT = 2.5'
 ** DEPTH TO PROTECT = 1.5'

REMOVE PAVEMENT
 RT. STA. 367+57.05 TO STA. 368+16.11
 REMOVE 97 SQ. YD. OF EXISTING PAVEMENT

RT. STA. 368+41.60 TO STA. 368+65.29
 REMOVE 11 SQ. YD. OF EXISTING PAVEMENT



C.P. #34, CONC. MON. AND DISK
 25.05' RT. STA. 367+05.84, ELEV. 929.98

C.P. #35, CONC. MON. AND DISK
 64.08' LT. STA. 379+70.80, ELEV. 938.83

R/W MONUMENT - TYPE 1
 RT. STA. 365+00 TO STA. 380+00,
 CONST. 9

SINKHOLES			
STATION	CLEAN	GEOTEXTILE FABRIC TY I (SY)	GRANULAR EMBANKMENT (CY)
370+31	1	59	9

*SEE GEOTECHNICAL NOTES FOR FURTHER TREATMENT

SEE PLAN SHEET R039A FOR RIGHT OF WAY INFORMATION

PLAN SHEET
 KY 52 RELOCATION
 STA. 365+00 TO STA. 380+00

FILE NAME: T:\4167-KY 52 MADISON PHASE 2\SHEETS\PLANS\R03900PL.DGN
 USER: EFisher
 DATE PLOTTED: September 13, 2021
 E-SHEET NAME:
 MicroStation v8.11.7.443

DITCH CONSTRUCTION - LEFT			
STATION	SIZE-SHAPE TYPE	LINING	
		TYPE	QUANTITY
380+00 TO 381+14.60	2' F.B. SURF. DT.	ECB	147 S.Y.
381+82.60 TO 383+00	2' F.B. SURF. DT.	ECB	151 S.Y.
383+00 TO 384+96.16	SPL. 2' F.B. DT.	ECB	286 S.Y.
384+75.00 INLET*	4' F.B. INLET DT.	CL. III	56 TONS
385+06.27 TO 386+50	SPL. 2' F.B. DT.	TRM I	149 S.Y.
386+50 TO 387+88.64*	SPL. 2' F.B. DT.	TRM I	243 S.Y.
388+39.99 TO 390+50*	SPL. 2' F.B. DT.	TRM I	336 S.Y.
390+50 TO 392+77.40	SPL. 2' F.B. DT.	ECB	398 S.Y.
393+21.78 TO 395+00	SPL. 2' F.B. DT.	ECB	314 S.Y.

* DEPTH TO PROTECT = 1.5'

RIGHT OF WAY CALLS

- (A) N 80°20'02" E
342.22'
- (B) RADIUS = 4515.00'
ARC LENGTH = 696.37'
CHORD LENGTH = 695.68'
BEARING = N 75°54'56" E
- (C) N 71°29'49" E
180.54'
- (D) RADIUS = 5015.00'
ARC LENGTH = 104.58'
CHORD LENGTH = 104.58'
BEARING = N 70°53'58" E
- (E) N 70°18'08" E
187.63'

REMOVE PAVEMENT

LT. STA. 380+00 TO STA. 381+27.69
REMOVE 190 SQ. YD. OF EXISTING PAVEMENT

LT. STA. 381+72.28 TO STA. 384+75.41
REMOVE 410 SQ. YD. OF EXISTING PAVEMENT

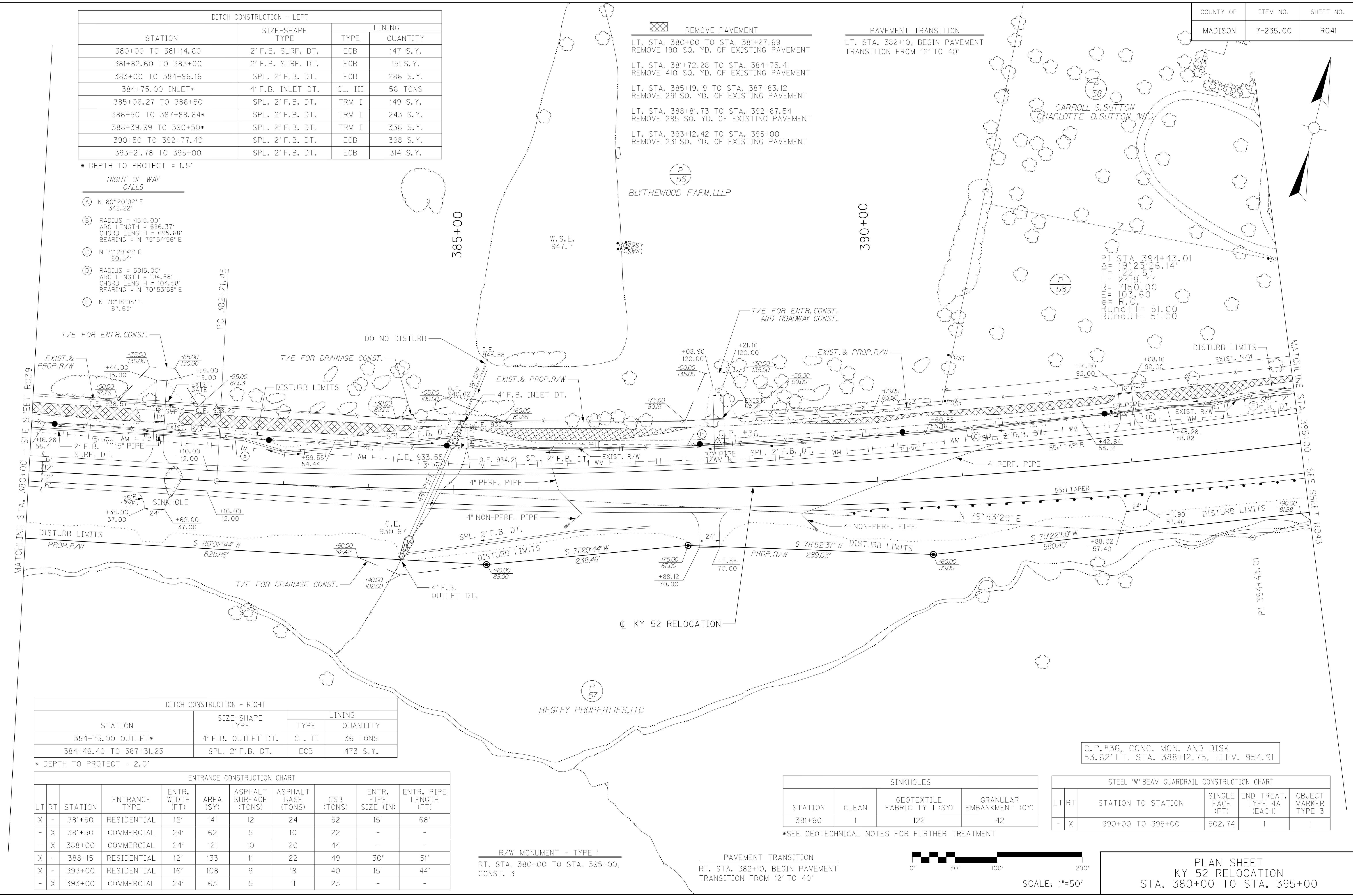
LT. STA. 385+19.19 TO STA. 387+83.12
REMOVE 291 SQ. YD. OF EXISTING PAVEMENT

LT. STA. 388+81.73 TO STA. 392+87.54
REMOVE 285 SQ. YD. OF EXISTING PAVEMENT

LT. STA. 393+12.42 TO STA. 395+00
REMOVE 231 SQ. YD. OF EXISTING PAVEMENT

PAVEMENT TRANSITION

LT. STA. 382+10, BEGIN PAVEMENT
TRANSITION FROM 12' TO 40'



MATCHLINE STA. 380+00 - SEE SHEET R039

MATCHLINE STA. 395+00 - SEE SHEET R043

DITCH CONSTRUCTION - RIGHT			
STATION	SIZE-SHAPE TYPE	LINING	
		TYPE	QUANTITY
384+75.00 OUTLET*	4' F.B. OUTLET DT.	CL. II	36 TONS
384+46.40 TO 387+31.23	SPL. 2' F.B. DT.	ECB	473 S.Y.

* DEPTH TO PROTECT = 2.0'

ENTRANCE CONSTRUCTION CHART										
LT	RT	STATION	ENTRANCE TYPE	ENTR. WIDTH (FT)	AREA (SY)	ASPHALT SURFACE (TONS)	ASPHALT BASE (TONS)	CSB (TONS)	ENTR. PIPE SIZE (IN)	ENTR. PIPE LENGTH (FT)
X	-	381+50	RESIDENTIAL	12'	141	12	24	52	15"	68'
-	X	381+50	COMMERCIAL	24'	62	5	10	22	-	-
-	X	388+00	COMMERCIAL	24'	121	10	20	44	-	-
X	-	388+15	RESIDENTIAL	12'	133	11	22	49	30"	51'
X	-	393+00	RESIDENTIAL	16'	108	9	18	40	15"	44'
-	X	393+00	COMMERCIAL	24'	63	5	11	23	-	-

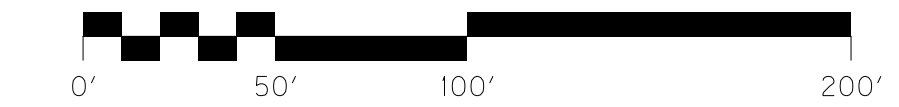
R/W MONUMENT - TYPE I
RT. STA. 380+00 TO STA. 395+00,
CONST. 3

PAVEMENT TRANSITION
RT. STA. 382+10, BEGIN PAVEMENT
TRANSITION FROM 12' TO 40'

SINKHOLES			
STATION	CLEAN	GEOTEXTILE FABRIC TY I (SY)	GRANULAR EMBANKMENT (CY)
381+60	1	122	42

*SEE GEOTECHNICAL NOTES FOR FURTHER TREATMENT

STEEL "W" BEAM GUARDRAIL CONSTRUCTION CHART					
LT	RT	STATION TO STATION	SINGLE FACE (FT)	END TREAT. TYPE 4A (EACH)	OBJECT MARKER TYPE 3
-	X	390+00 TO 395+00	502.74	1	1



SCALE: 1"=50'

C.P. #36, CONC. MON. AND DISK
53.62' LT. STA. 388+12.75, ELEV. 954.91

PLAN SHEET
KY 52 RELOCATION
STA. 380+00 TO STA. 395+00

FILE NAME: T:\4167-KY 52 MADISON PHASE 2\SHEETS\PLANS\R041D00PL.DGN
 USER: EFisher
 DATE PLOTTED: September 13, 2021
 E-SHEET NAME:
 MicroStation v8.11.7.443

DITCH CONSTRUCTION - LEFT			
STATION	SIZE-SHAPE TYPE	LINING	
		TYPE	QUANTITY
395+00 TO 396+69.86	SPL. 2' F.B. DT.	ECB	243 S.Y.
396+06.00 INLET*	3' F.B. INLET DT.	CL. III	52 TONS
396+76.90 TO 397+00	SPL. 2' F.B. DT.	TRM I	24 S.Y.
397+00 TO 397+50*	SPL. 2' F.B. DT.	TRM I	103 S.Y.
397+50 TO 398+00	SPL. 2' F.B. DT.	TRM I	90 S.Y.

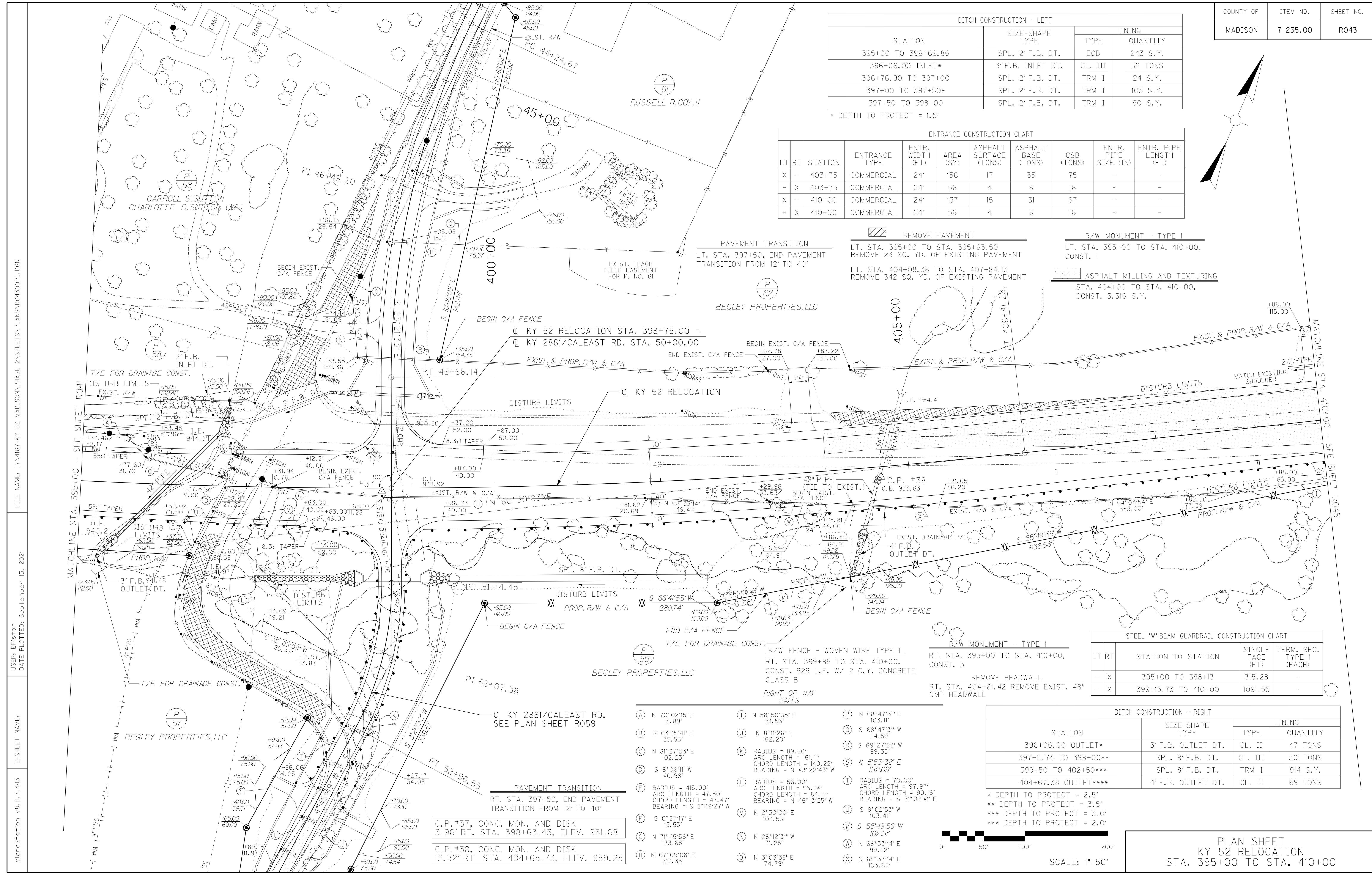
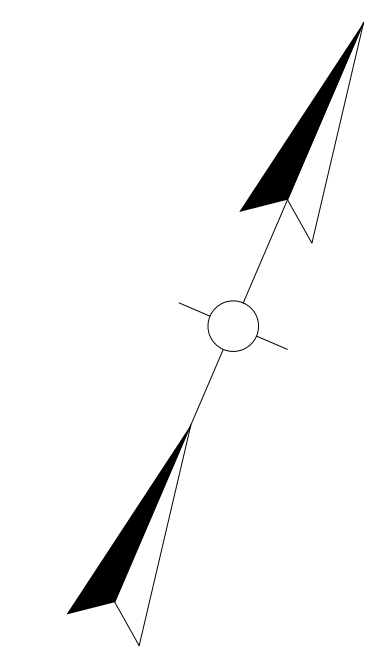
* DEPTH TO PROTECT = 1.5'

ENTRANCE CONSTRUCTION CHART										
LT	RT	STATION	ENTRANCE TYPE	ENTR. WIDTH (FT)	AREA (SQ)	ASPHALT SURFACE (TONS)	ASPHALT BASE (TONS)	CSB (TONS)	ENTR. PIPE SIZE (IN)	ENTR. PIPE LENGTH (FT)
X	-	403+75	COMMERCIAL	24'	156	17	35	75	-	-
-	X	403+75	COMMERCIAL	24'	56	4	8	16	-	-
X	-	410+00	COMMERCIAL	24'	137	15	31	67	-	-
-	X	410+00	COMMERCIAL	24'	56	4	8	16	-	-

REMOVE PAVEMENT
 LT. STA. 395+00 TO STA. 395+63.50
 REMOVE 23 SQ. YD. OF EXISTING PAVEMENT
 LT. STA. 404+08.38 TO STA. 407+84.13
 REMOVE 342 SQ. YD. OF EXISTING PAVEMENT

R/W MONUMENT - TYPE I
 LT. STA. 395+00 TO STA. 410+00,
 CONST. 1

ASPHALT MILLING AND TEXTURING
 STA. 404+00 TO STA. 410+00,
 CONST. 3,316 S.Y.



STEEL 'W' BEAM GUARDRAIL CONSTRUCTION CHART			
LT	RT	STATION TO STATION	TERM. SEC. TYPE I (EACH)
-	X	395+00 TO 398+13	315.28
-	X	399+13.73 TO 410+00	1091.55

DITCH CONSTRUCTION - RIGHT			
STATION	SIZE-SHAPE TYPE	LINING	
		TYPE	QUANTITY
396+06.00 OUTLET*	3' F.B. OUTLET DT.	CL. II	47 TONS
397+11.74 TO 398+00**	SPL. 8' F.B. DT.	CL. III	301 TONS
399+50 TO 402+50***	SPL. 8' F.B. DT.	TRM I	914 S.Y.
404+67.38 OUTLET****	4' F.B. OUTLET DT.	CL. II	69 TONS

* DEPTH TO PROTECT = 2.5'
 ** DEPTH TO PROTECT = 3.5'
 *** DEPTH TO PROTECT = 3.0'
 **** DEPTH TO PROTECT = 2.0'



SCALE: 1"=50'

PLAN SHEET
 KY 52 RELOCATION
 STA. 395+00 TO STA. 410+00

- (A) N 70°02'15" E 15.89'
- (B) S 63°15'41" E 35.55'
- (C) N 81°27'03" E 102.23'
- (D) S 6°06'11" W 40.98'
- (E) RADIUS = 415.00' ARC LENGTH = 47.50' CHORD LENGTH = 47.47' BEARING = S 2°49'27" W
- (F) S 0°27'17" E 15.53'
- (G) N 71°45'56" E 133.68'
- (H) N 67°09'08" E 317.35'
- (I) N 58°50'35" E 151.55'
- (J) N 8°11'26" E 162.20'
- (K) RADIUS = 89.50' ARC LENGTH = 161.11' CHORD LENGTH = 140.22' BEARING = N 43°22'43" W
- (L) RADIUS = 56.00' ARC LENGTH = 95.24' CHORD LENGTH = 84.17' BEARING = N 46°13'25" W
- (M) N 2°30'00" E 107.53'
- (N) N 28°12'31" W 71.28'
- (O) N 3°03'38" E 74.79'
- (P) N 68°47'31" E 103.11'
- (Q) S 68°47'31" W 94.59'
- (R) S 69°27'22" W 99.35'
- (S) N 5°53'38" E 152.09'
- (T) RADIUS = 70.00' ARC LENGTH = 97.97' CHORD LENGTH = 90.16' BEARING = S 31°02'41" E
- (U) S 9°02'53" W 103.41'
- (V) S 55°49'56" W 102.51'
- (W) N 68°33'14" E 99.92'
- (X) N 68°33'14" E 103.68'

C.P. #37, CONC. MON. AND DISK
 3.96' RT. STA. 398+63.43, ELEV. 951.68

C.P. #38, CONC. MON. AND DISK
 12.32' RT. STA. 404+65.73, ELEV. 959.25

FILE NAME: T:\4167-KY 52 MADISON PHASE 2 SHEETS\PLANS\R043O0PL.DGN
 USER: EFisher
 DATE PLOTTED: September 13, 2021
 MicroStation v8.11.7.443
 E-SHEET NAME: